

ExtraHop Application Delivery Assurance System

The ExtraHop Application Delivery Assurance System is a comprehensive visibility solution for networks and applications. Pinpoint problems. Tune for performance. Deploy with ease.

EXTRAHOP APPLICATION DELIVERY ASSURANCE SYSTEM

Today's businesses are powered by mission-critical applications and ultra-complex networks. When something goes wrong, is your network always getting the blame? Does it take a herculean effort to diagnose every intermittent problem? Are you confident that your network infrastructure is tuned for your specific application mix? Do you have all the data you need to demonstrate the true ROI of your latest infrastructure or application project?

ExtraHop helps you to tackle these problems head-on. The ExtraHop Application Delivery Assurance System is an enterprise-class network and application visibility solution, providing fully application-aware performance metrics with zero agents, zero overhead, and zero configuration. Embrace the power of ExtraHop for all of your troubleshooting, performance-tuning, and capacity-planning needs.

Say No to "Blamestorming"

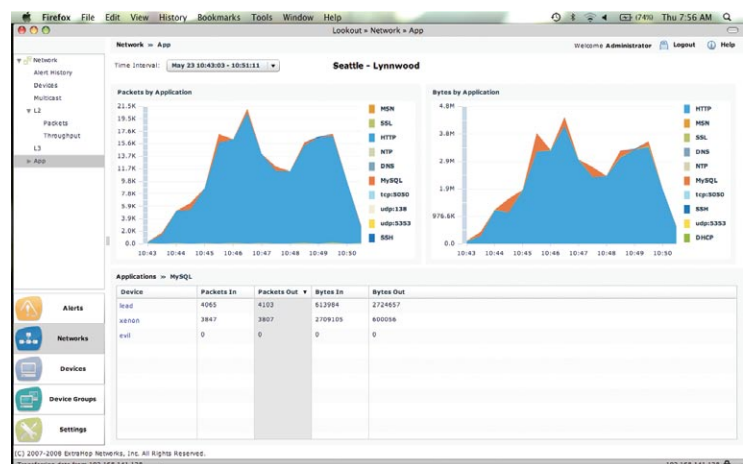
Enterprise applications are getting more and more complex, with many moving parts that can become potential bottlenecks. The typical troubleshooting process still involves teams of experts jumping on a bridge line and iterating through a dozen or more silo-based tools to eliminate various suspects. The blamestorm is a painful, time-consuming process that ends up costing hundreds of thousands of dollars in man-hours, lost business, and employee productivity.

The ExtraHop Application Delivery Assurance System takes the guesswork out of your troubleshooting process. Whether you are troubleshooting the network, the application, or the database, all of the essential information you need can be found on your network. The ExtraHop Delivery Assurance System taps into this wealth of data effortlessly to extract the most important metrics and error details. ExtraHop helps you to:

- Troubleshoot intermittent problems
- Isolate slow stored procedures
- Identify applications and users that hog bandwidth

Key Features and Benefits:

- Pinpoints performance bottlenecks rapidly and with ease
- Provides an integrated view across applications, networks, and databases
- Reduces time to resolution for even the toughest performance problems
- Accelerates delivery of mission-critical applications through proper tuning
- Lowers hardware costs by accurately assessing and predicting system capacity
- Delivers intelligent baselining and benchmarking



Optimize Network Infrastructure

As networking equipment becomes more sophisticated, complex settings and configurations are exposed to network-engineering teams. Even to the most battle-hardened network veterans, the myriad of options and obscure terminology can seem daunting. The adverse effects of improperly tuned networking gear can be quite severe, as applications experience unintended throttling instead of acceleration.

The ExtraHop Application Delivery Assurance System shines a spotlight on the most critical tuning parameters to enable your team to make the best tuning decisions. The online Help provides a detailed explanation of each tuning parameter and general guidelines to turn every network engineer into a TCP tuning expert.

Understand True Capacity and ROI

Without accurate benchmarks, IT organizations tend to overbuy hardware and bandwidth. The fear of an underpowered system motivates IT management to throw dollars at the problem, costing the business millions in unnecessary expenditures. The flip side of this problem is not being able to justify an equipment purchase due to a lack of understanding of current and projected capacity.

The ExtraHop Application Delivery Assurance System offers up intelligent baselining that learns over time, based on your specific network patterns. Baselines are calculated separately for the time of day and the day of the week and are banded based on the 5th and 95th percentiles to deliver the most realistic picture possible. These detailed metrics enable network teams to plan for capacity and demonstrate the true ROI of infrastructure and application projects.

How It Works

The ExtraHop Application Delivery Assurance system is a completely passive network device that hangs off of a SPAN or network tap. It auto-discovers all servers and devices connected via the network without additional

configuration. With a deep understanding of networking protocols and close examination of your network traffic, the ExtraHop solution reconstructs the full picture of your applications as they traverse the network.

The networking microkernel captures and processes all of your transactions simultaneously and in real time, reassembling the stream and surfacing the most useful metrics. The intelligent protocol framework deciphers network traffic based on the supported protocols and highlights protocol-specific metrics that are relevant to application and network performance. The dynamic data store archives vast volumes of performance metrics in real time, at disruptive speeds. Finally, a rich web user interface enables easy navigation and rapid drilldowns to individual applications, devices, protocols, and even specific errors and stored procedures.

The ExtraHop Advantage

The ExtraHop Application Delivery Assurance System is a revolutionary solution that brings innovation back to network- and application-performance management. Unlike traditional network management tools, the ExtraHop solution:

- Provides an integrated view across applications, networks, and databases with full L2-L7 visibility
- Offers disruptive levels of performance to keep up with the most demanding networks and applications
- Delivers instant ROI with zero agents, zero overhead, and zero configuration

Why wait, request a FREE trial today and get started on the path toward application-delivery assurance.

EXTRAHOP PRODUCT ARCHITECTURE

Rich Web UI

- Drill-down reports
- Waterfall diagrams
- Adaptive zoom
- Transaction metrics
- Intuitive workflows

Networking Micro-Kernel

- Real-time packet processing
- Auto device discovery
- Stream re-assembly

Dynamic Data-Store

- Metrics archiving
- Event correlation
- Trending and baselining
- Report generation

Protocol Adapters

- HTTP
- DB
- SSL
- DNS
- ICMP
- TCP
- Multicast
- IPv6